

**FLEXIBLE, FAST
LOW-LATENCY SATELLITE
CONNECTIVITY FOR
THE RAIL INDUSTRY**

WHY EUTELSAT POWERFUL, RELIABLE, COMMITTED NETWORK PERFORMANCE

Eutelsat is a global leader in satellite communications networks. We are headquartered in Europe, listed on the London and Paris stock exchanges, and work for governments as well as enterprise and industries around the world.

We operate, OneWeb, one of the most advanced low Earth orbit (LEO) satellite networks to deliver reliable, global network services on land, at sea and in the air. We work with world-class experts in space and ground technology to ensure our connectivity solutions are second to none and free from interference. Unlike other LEO networks, our exclusive focus on B2B and government clients ensures that your connectivity is never compromised by consumer traffic.



OUR GO-TO-MARKET MODEL

B2B WHOLESALE ENABLING LOCAL PARTNERSHIPS

We work alongside trusted and certified partners that deliver technical solutions to meet your individual needs, with personalised on-site support as and when required. Our partners include regional telecommunication companies, service providers and integrators, who offer turn-key solutions, including integration of SD WAN, cloud hosting, cyber security and managed IT support.

LOOKING AFTER YOU ALL THE WAY

Because we put customers first, we back our services with clear Service Level Agreements (SLAs), ensuring predictable performance and reliability from our satellite communications network. Combined with 24/7 support and proactive management, we deliver a truly enterprise-grade solution you can trust.

COMMUNICATIONS ON THE GO

Eutelsat's OneWeb LEO constellation delivers global satellite coverage, ensuring rail operators benefit from fast, low-latency connectivity. From on-board internet access for passengers and crew to reliable links between rolling stock and train depots, and robust communications from remote sites to control centres—Eutelsat keeps your operations connected, everywhere.

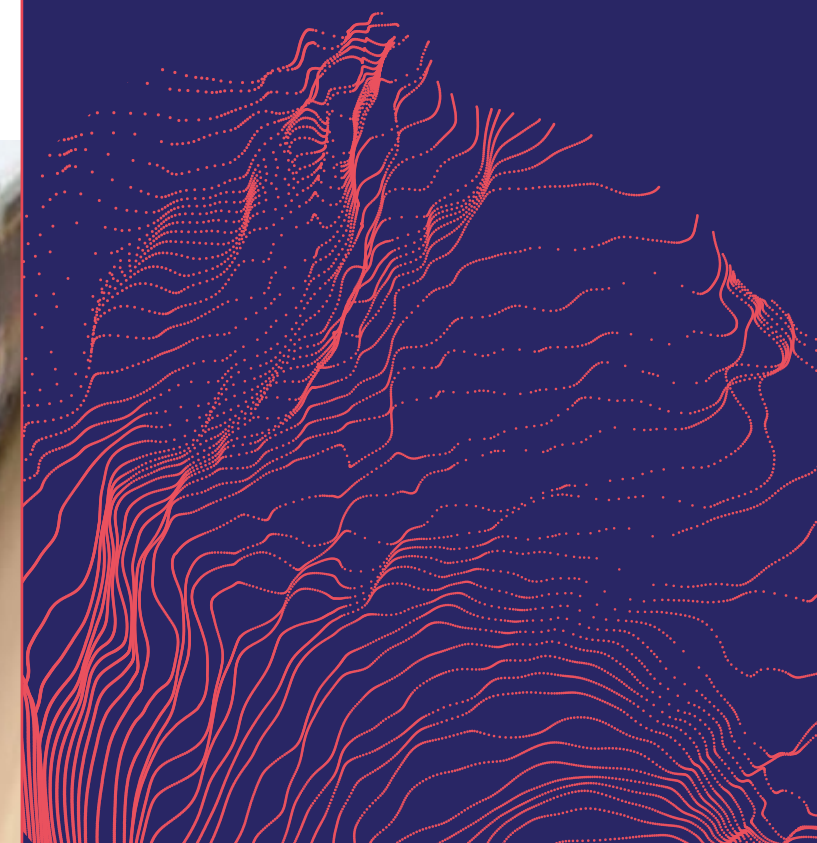
QUICK, EASY & COST-EFFECTIVE COMMUNICATIONS

Because OneWeb eliminates the need for extensive infrastructure investments, it can be deployed rapidly and cost-effectively. All that's required is the installation of user terminals seamlessly integrated into the rail communications system. OneWeb is designed to complement other communication technologies, making it suitable as a stand-alone solution or as part of a hybrid approach alongside terrestrial options such as mobile networks and mmWave solutions.



SATELLITE CONNECTIVITY FOR TRANSPORT

Eutelsat's satellite network solutions enhance and incorporate the best of existing terrestrial mobile technology to make passenger Wi-Fi and connected operations more cost effective.



READY TO TALK TO US ABOUT YOUR CONNECTIVITY NEEDS?

Whether you're planning a new connectivity strategy or looking to strengthen the performance of your existing network, our team is ready to guide you through the possibilities. Talk to us today and discover how our satellite expertise can bring reliable, end-to-end communication to every part of your rail operations.



To find out more
visit our website